

## SAT Math Maze Teacher Directions

- Objective: To practice SAT math questions and identify common error traps.  
 Teams: Individuals or teams of 2  
 Length: About 10 minutes  
 Preparation: Make one copy of the SAT Math Maze for each student.  
 Draw the example below on the white board or chalk board.  
 Optional: Candy bars for prizes

Directions:

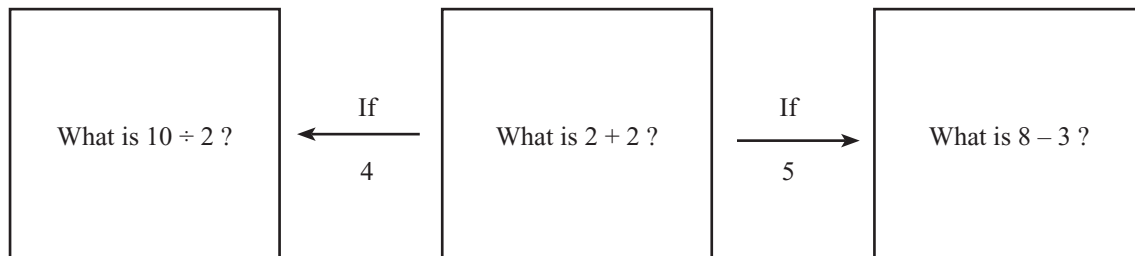
1. Draw the example on the white board or chalk board. Distribute the SAT Math Maze to each student. Instruct students to leave the worksheet face down until they are told to begin.
2. Read the following directions to students:

You are about to embark on an SAT Math Maze. Starting in the center of the maze, you must answer 4 questions correctly to find the exit. Each question has two multiple choice answers, and each answer reveals your next question. Look at the example on the board. The first three questions in the maze will look like the one on the board, with directions for finding your next question. The fourth and final question requires you to write in the answer.

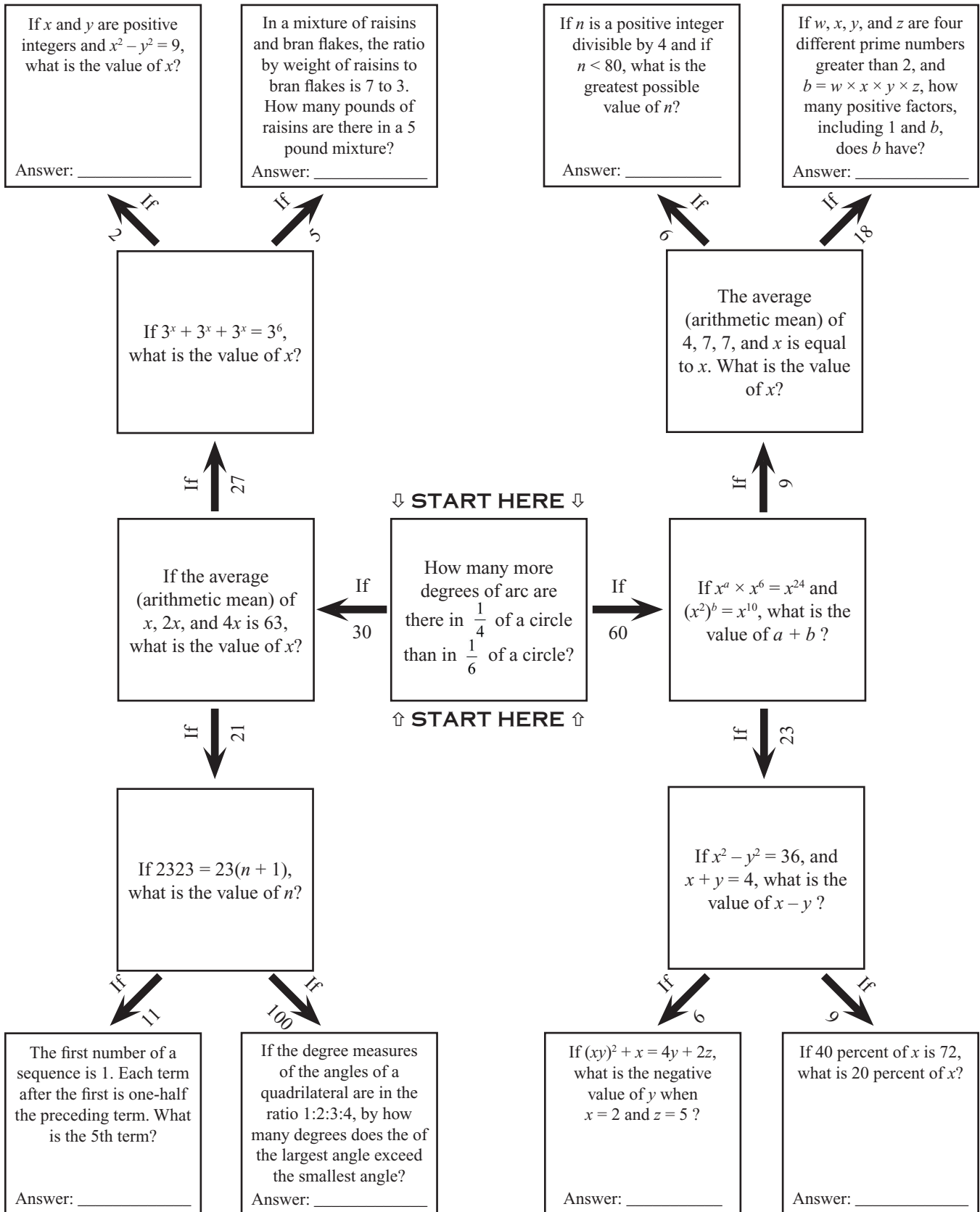
The winning student is the first to correctly answer the fourth question on the correct path. To determine if you answered all four questions correctly, raise your hand when you complete the maze. Your teacher will verify whether or not you are correct.

3. After the game is over, review all 15 questions with the class to discuss strategies and common error traps.

EXAMPLE:



# SAT Math Maze



# SAT Math Maze Answer Key

The correct answer path is highlighted in bold. The correct final answer is 3.5.

